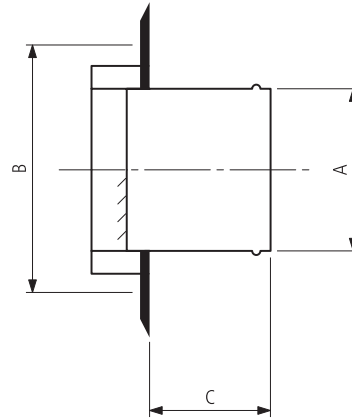




Dimensions



Description

Depending on their application, UELA components can be used as air intakes or roof ejectors. In addition, the air intake is provided with insect mesh. It is well sealed and fitted with mounting clamps to make its installation easier. The external ring has two mounting holes. UELA components are featured by an attractive appearance and long durability. They can be used both indoors and outdoors.

Material: steel sheet
Furnishing: polishing

Example identification
 Product code: **UELA** **aaa**

type _____
 Æd _____

Ød [mm]	A [mm]	B [mm]	C [mm]
100	97	133	52
125	120	165	52
150	145	192	62
160	155	192	62
200	195	253	62