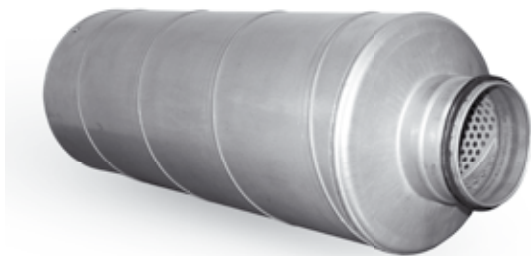


Circular silencers

SIL

[Download Wentyle](#)
[Download AlnorCAM](#)
[Buy via B2B](#)



Description

The silencers are usually supplied with SPIRAL®system sealing. Diameters $d_1 > 315$ mm require additional NSL couplings to be ordered, which should be installed in the silencer prior to installation. These male ends are not silencer parts, and they should be ordered separately.

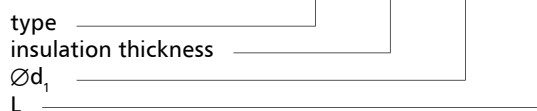
Glass mineral wool inside with thickness:

50 mm dla **SIL-50** - depending on the dimension of the outer casing

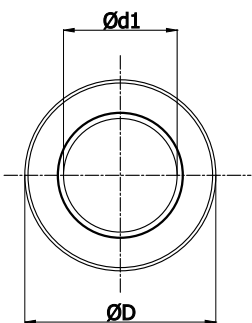
100 mm dla **SIL-100** - depending on the dimension of the outer casing

Example identification

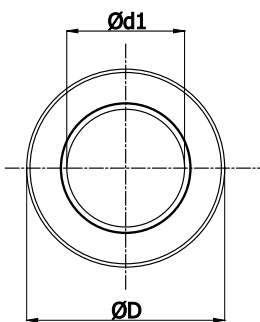
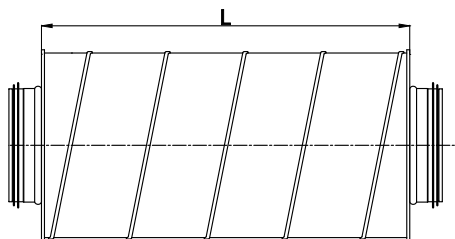
Product code: **SIL - iii - aaa - bbb**



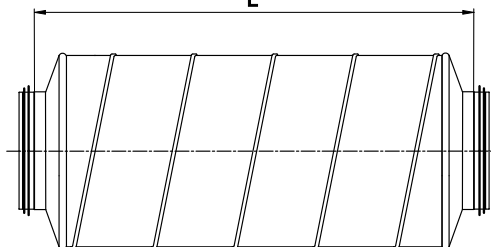
Dimensions



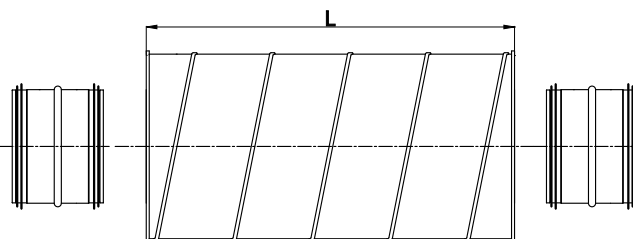
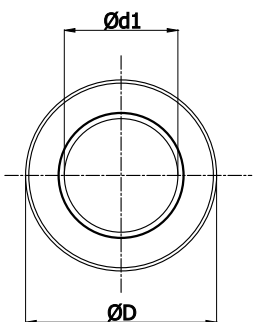
For diameters $d_1 \leq 315$ mm



For diameters $d_1 > 315$ mm



silencers made with pressed reductions



Dimensions

SIL-50 - 50 mm thickness insulation

Description	$\varnothing d_1$ nom [mm]	D nom [mm]	L [mm]	attenuation [dB] for frequency [Hz]						weight [kg]
				125	250	500	1000	2000	4000	
SIL 80-300	80	180	300	5	11	15	25	28	23	2
80-600	80	180	600	7	18	26	29	29	24	3
80-900	80	180	900	9	26	38	33	30	26	5
80-1200	80	180	1200	11	30	36	37	31	27	7
SIL 100-300*	100	200	350	5	9	12	20	25	17	2
100-600*	100	200	650	7	15	25	33	29	24	3
100-900*	100	200	950	9	22	32	36	33	31	5
100-1200*	100	200	1200	11	25	36	39	37	38	7
SIL 125-300*	125	224	350	3	7	14	19	16	19	3
125-600*	125	224	650	5	13	21	37	37	31	4
125-900*	125	224	950	7	16	28	38	38	35	7
125-1200*	125	224	1250	9	20	34	39	39	36	9
SIL 160-300*	160	250	350	2	8	12	15	15	14	3
160-600*	160	250	650	3	11	22	33	42	29	6
160-900*	160	250	950	8	14	23	39	37	25	8
160-1200*	160	250	1250	11	19	35	38	47	41	10
SIL 200-300*	200	300	350	2	4	8	15	18	13	4
200-600*	200	300	650	4	8	15	31	28	20	7
200-900*	200	300	950	8	9	20	32	35	23	10
200-1200*	200	300	1250	11	17	26	34	40	26	12
SIL 250-600	250	355	600	6	9	13	24	15	15	9
250-900	250	355	900	8	11	20	33	24	18	12
250-1200	250	355	1200	10	13	25	38	29	24	15

* silencers made with pressed end cups

SIL-100 - 100 mm thickness insulation

Description	$\varnothing d_1$ nom [mm]	D nom [mm]	L [mm]	attenuation [dB] for frequency [Hz]						weight [kg]
				125	250	500	1000	2000	4000	
SIL 315-600	315	500	600	5	5	11	19	12	10	12
315-900	315	500	900	7	9	16	30	18	14	18
315-1200	315	500	1200	9	12	21	36	18	17	24
SIL 400-600	400	600	600	5	6	9	13	10	7	16
400-900	400	600	900	7	7	14	22	15	13	22
400-1200	400	600	1200	7	10	14	22	18	13	32
SIL 500-900	500	710	900	6	8	14	16	13	13	26
500-1200	500	710	1200	8	11	22	24	17	16	39
SIL 630-900	630	800	900	4	7	12	12	12	10	44
630-1200	630	800	1200	5	10	16	15	15	11	56
SIL 800-1200	800	1000	1200	4	5	10	9	15	12	69
800-1500	800	1000	1500	4	7	13	12	15	12	86