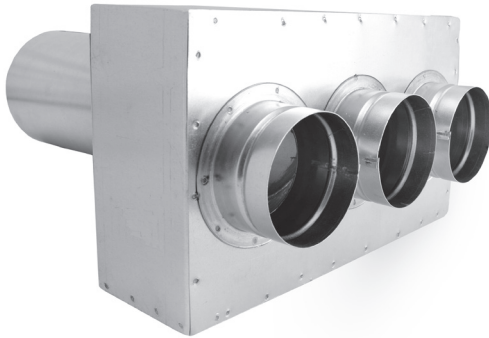


# Plenum boxes

## FLX-PRO-PL...

[Download Wentyle](#)  
[Download AlnorCAM](#)  
[Buy via B2B](#)



### Description

FLX-PRO-PL plenum boxes are connecting pieces for FLX-HDPE and FLX-HDPE-A flexible ducts, which form a distribution system for mechanical installations, including recuperator systems.

Due to small size, they do not require a lot of space or special installation. This allows to save more usable interior space. FLX-PRO-PL plenum boxes are made of galvanized steel.

On special request, it is possible to make the plenum boxes using stainless steel.

It is possible to order insulated FLX-PRI-PL plenum boxes. Plenum boxes are inside insulated with technical insulation with thickness of 9mm. Weldings are made outside the plenum boxes.

To preserve the tightness class C it is recommended to use gasket FLX-USZ or FLX-USC.

Note:

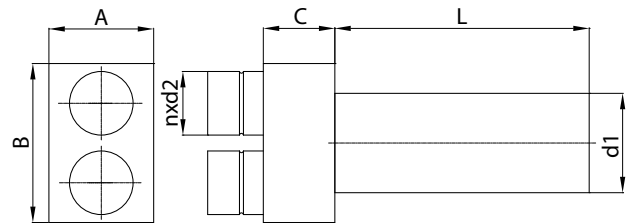
Standard diameter  $d_1$  is made as nippel.

#### Example

Product code **FLX-PRO-PL - 75 - 2**

type \_\_\_\_\_  
 diameter \_\_\_\_\_  
 connections \_\_\_\_\_

### Dimensions



code	A [mm]	B [mm]	C [mm]	L [mm]	d1 [mm]	n [szt.]	d2 [mm]
FLX-PRO-PL-63-2	160	180	75	320	125	2	63
FLX-PRO-PL-63-3	160	270	75	320	125	3	63
FLX-PRO-PL-75-2	180	200	90	320	125	2	75
FLX-PRO-PL-75-3	180	300	90	320	125	3	75
FLX-PRO-PL-90-2	200	240	110	320	125	2	90
FLX-PRO-PL-90-3	200	360	110	320	125	3	90