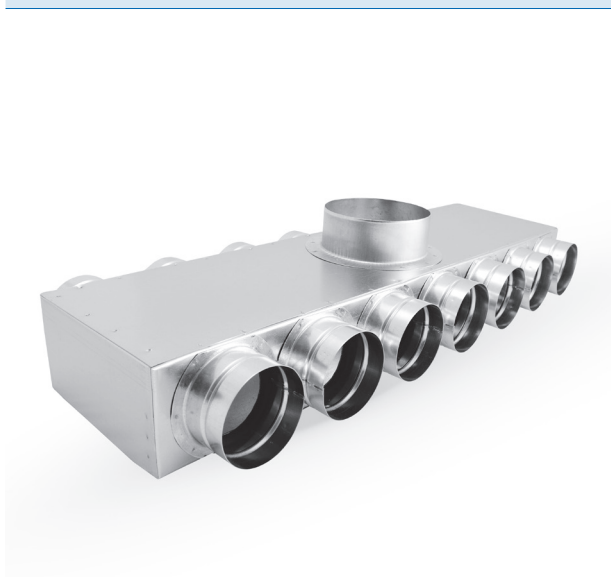


# Plenum boxes FLX-PRO...

[Download Wentyle](#)  
[Download AlnorCAM](#)  
[Buy via B2B](#)



## Description

FLX-PRO plenum boxes are connecting pieces for FLX-HDPE and FLX-HDPE-A flexible ducts, which form a distribution system for mechanical installations, including recuperator systems. Due to small size, they do not require a lot of space or special installation. This allows to save more usable interior space. FLX-PRO plenum boxes are made of galvanized steel. On special request, it is possible to make the plenum boxes using stainless steel. It is possible to order insulated FLX-PRI plenum boxes. Plenum boxes are inside insulated with technical insulation with thickness of 9mm. Weldings are made outside the plenum boxes. To preserve the tightness class C it is recommended to use gasket FLX-USZ or FLX-USC.

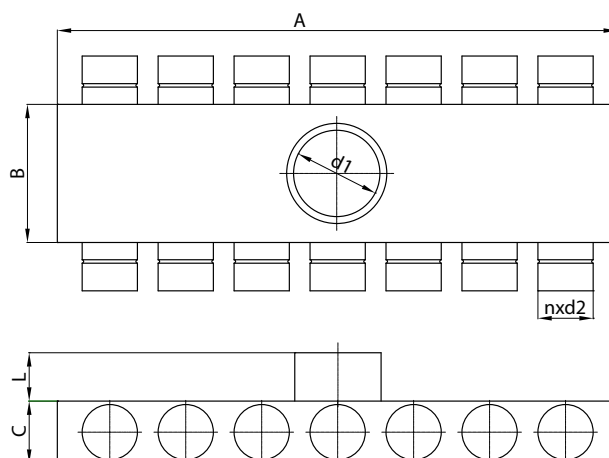
Note:  
Standard diameter  $d_1$  is made as nippel.

### Example

Product code **FLX-PRO - 75 - 7-7**

type \_\_\_\_\_  
diameter \_\_\_\_\_  
connections \_\_\_\_\_

## Dimensions



code	A [mm]	B [mm]	C [mm]	L [mm]	d1 [mm]	n [szt]	d2 [mm]
FLX-PRO-63-7-7	630	280	75	60	200	14	63
FLX-PRO-75-7-7	700	300	90	60	200	14	75
FLX-PRO-90-7-7	840	360	110	60	200	14	90