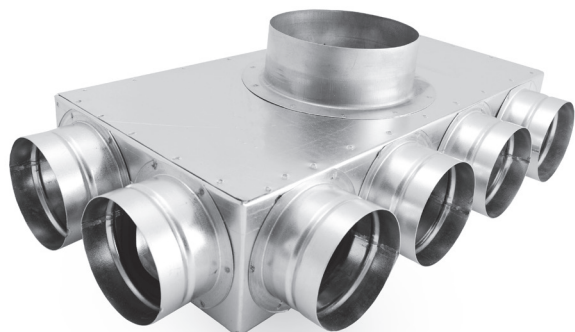


Plenum boxes FLX-PRO...



Description

FLX-PRO plenum boxes are connecting pieces for FLX-HDPE and FLX-HDPE-A flexible ducts, which form a distribution system for mechanical installations, including recuperator systems. Due to small size, they do not require a lot of space or special installation. This allows to save more usable interior space. FLX-PRO plenum boxes are made of galvanized steel. On special request, it is possible to make the plenum boxes using stainless steel. It is possible to order insulated FLX-PRI plenum boxes. Plenum boxes are inside insulated with technical insulation with thickness of 9mm. Weldings are made outside the plenum boxes. To preserve the tightness class C it is recommended to use gasket FLX-USZ or FLX-USC.

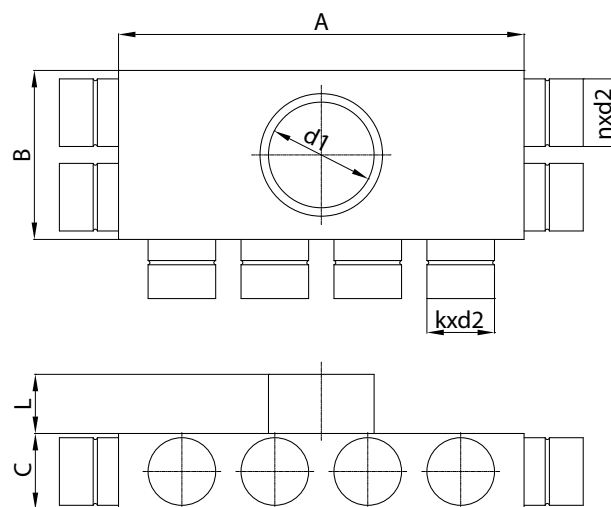
Note:
Standard diameter d_1 is made as nippel.

Example

Product code **FLX-PRO - 75 - 2-4-2**

type _____
 diameter _____
 connections _____

Dimensions



code	A [mm]	B [mm]	C [mm]	L [mm]	d1 [mm]	n [szt]	k [szt]	d2 [mm]
FLX-PRO-63-2-4-2	360	180	75	60	160	4	4	63
FLX-PRO-63-3-6-3	540	270	75	60	200	6	6	63
FLX-PRO-75-2-4-2	400	200	90	60	160	4	4	75
FLX-PRO-75-3-6-3	600	300	90	60	200	6	6	75
FLX-PRO-90-2-4-2	480	240	110	60	160	4	4	90
FLX-PRO-90-3-6-3	720	360	110	60	200	6	6	90