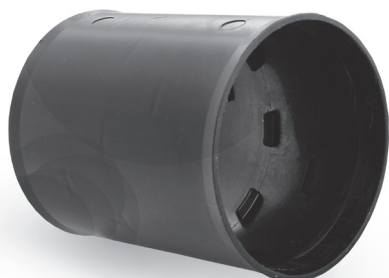
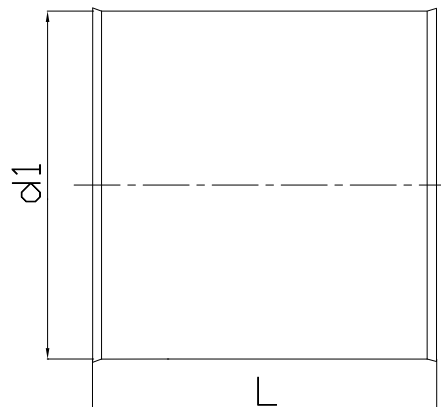


Sleeve couplings FLX-MSF...

[Download Wentyle](#)
[Download AlnorCAM](#)
[Buy via B2B](#)



Dimensions



Description

FLX-MSF sleeve coupling is used to connect FLX-HDPE and FLX-HDPE-A ducts. To maintain the tightness of the entire system, we recommend to purchase two FLX-USZ EPDM washers.

Example

Product code: **FLX-MSF - 75**

type _____
 diameter _____

code	d1 [mm]	L [mm]
FLX-MSF-75	75	100
FLX-MSF-90	90	100