

Duct Fan DV

[Download Wentyle](#)
[Download AlnorCAM](#)
[Buy via B2B](#)



Description

DV duct fan is used to blow and exhaust air to/from ventilation ducts. DV is connected with round ducts by male couplings.

Maximum temperature for our DV fan is +60C°, and minimum temperature is -20C°. Ingress protection: IP44

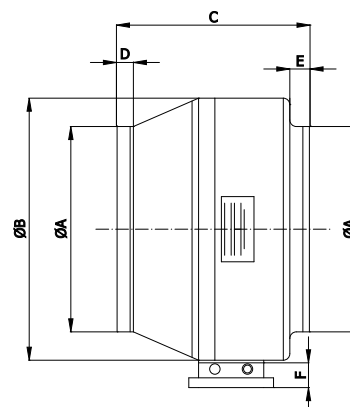
Example identification

Product code: **DV** - **aaa**

type
ØA



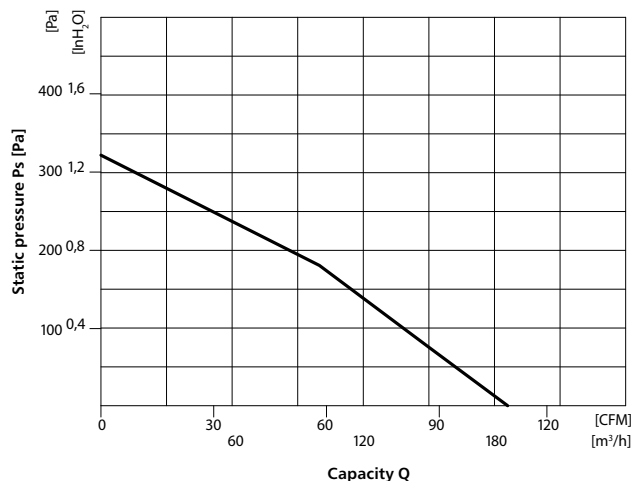
Dimensions



Type	A [mm]	B [mm]	C [mm]	D [mm]	E [mm]	F [mm]	Weight [kg]
DV-100	100	237	204	25	25	42	3,40
DV-125	125	237	193	25	25	42	3,80
DV-150	150	278	195	25	25	42	3,60
DV-160	160	278	195	25	25	42	3,60
DV-200	200	333	210	25	25	42	5,10
DV-250	250	333	210	28,5	28,5	42	4,90
DV-315	315	402	265	25	30	42	7,80

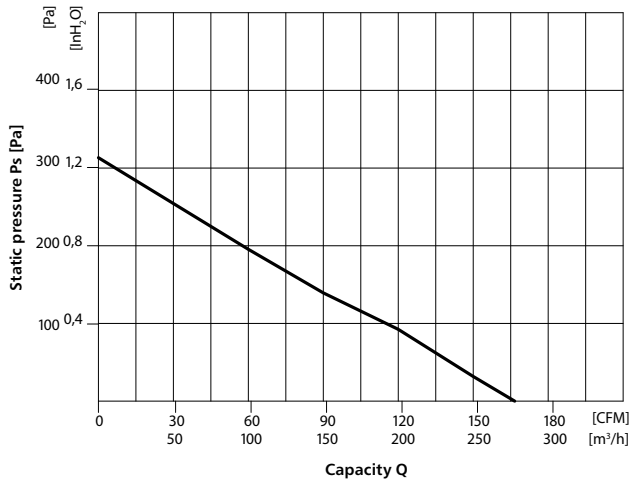
Type	Power input [W]	Current [A]	Speed [rpm]	Voltage [V]	Noise level [dB]	Insulation class
DV-100	62	0,25	2 604	240	45	F (155°C)
DV-125	67	0,27	2 613	240	46	F (155°C)
DV-150	64	0,26	2 563	240	47	F (155°C)
DV-160	131	0,57	2 688	240	47	F (155°C)
DV-200	160	0,65	2 532	240	52	F (155°C)
DV-250	175	0,73	2 490	240	52	F (155°C)
DV-315	254	1,05	2 509	240	51	F (155°C)

Fan flow curves DV-100

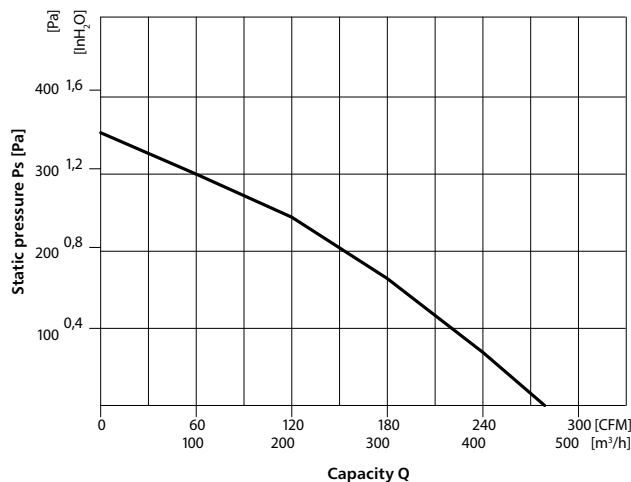


Charts

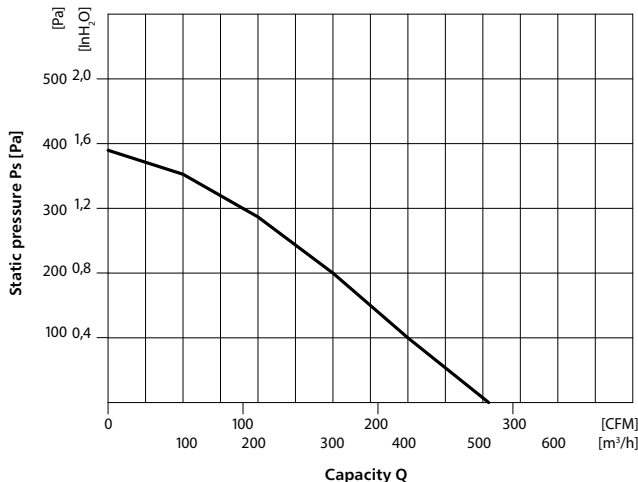
Fan flow curves DV-125



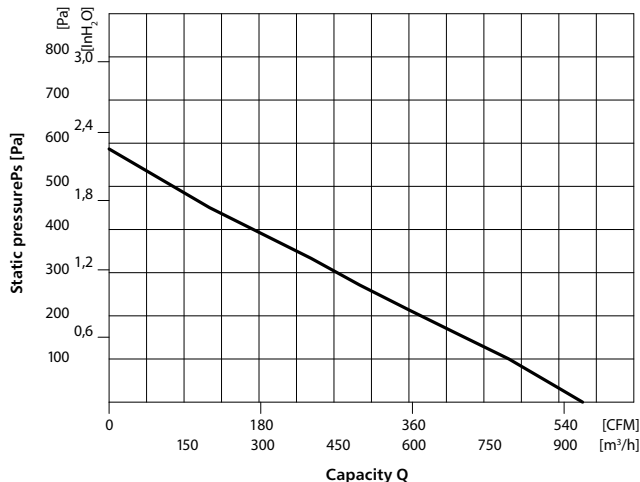
Fan flow curves DV-150



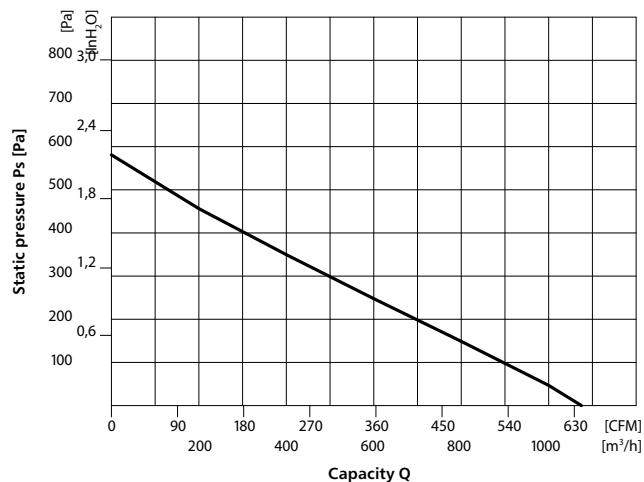
Fan flow curves DV-160



Fan flow curves DV-200



Fan flow curves DV-250



Fan flow curves DV-315

